

**SUBJECT: 2011 through 2013 MY Supply Pump Re-Learn Procedure**

Department: Service  
 Section: Engine  
 Model(s): All  
 Model Year(s): 2011, 2012, 2013  
 Effective Date: 9/27/2012  
 Form #: TSB EN-48  
 Rev #: n/a  
 Supersedes:

**Purpose:**

Recommended usage of the Supply Pump Re-Learn procedure using VCADS on the 2011 through 2013 model year trucks.

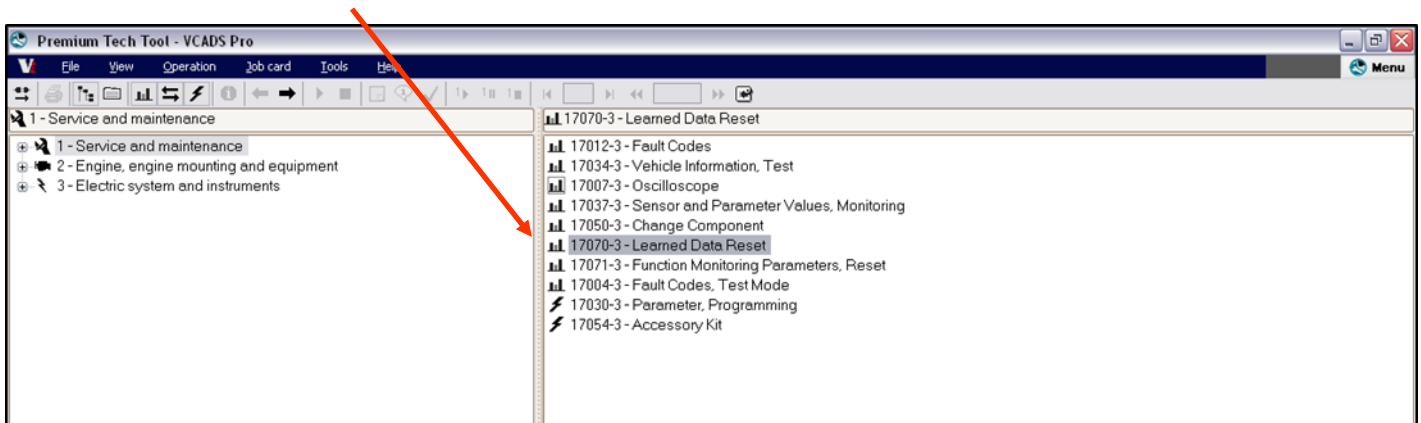
**Procedure:**

The Supply Pump Re-Learn procedure **MUST** be performed:

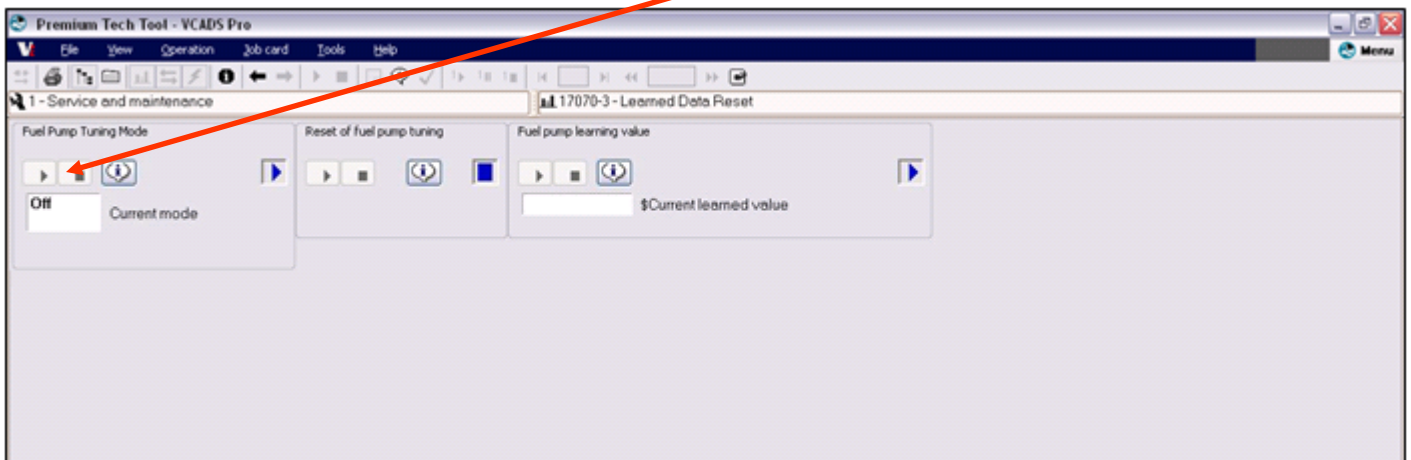
- After programming of the Engine Control Module (ECM)
- When replacing the Supply Pump
- When installing a Suction Control Valve (SCV) in the supply pump

**NOTE: Engine must be running when performing the following procedures.**

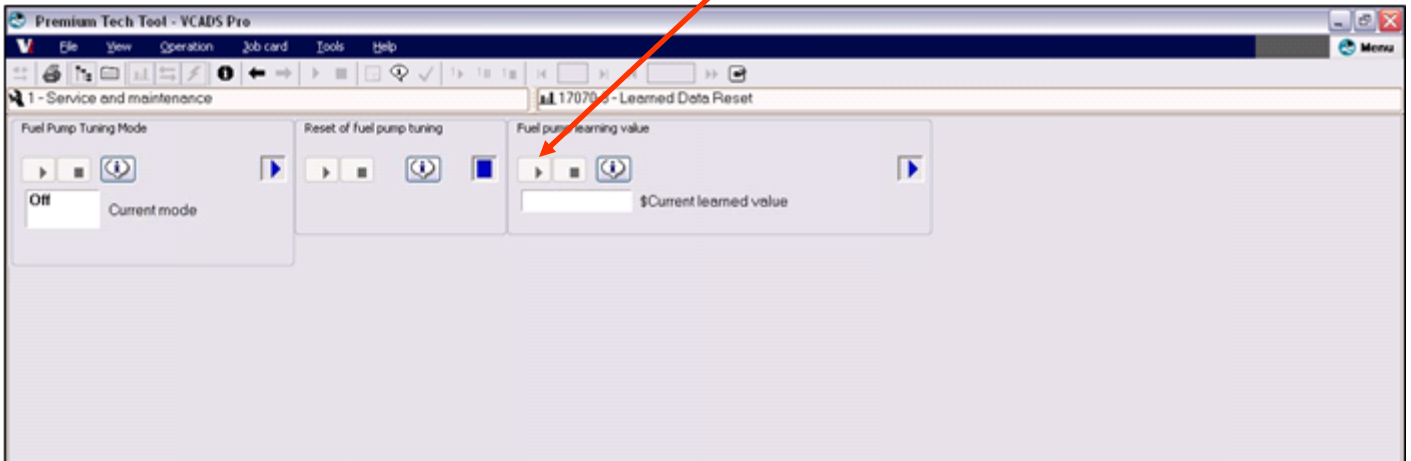
**STEP 1:** Select 17070-3-Learned Data Reset.



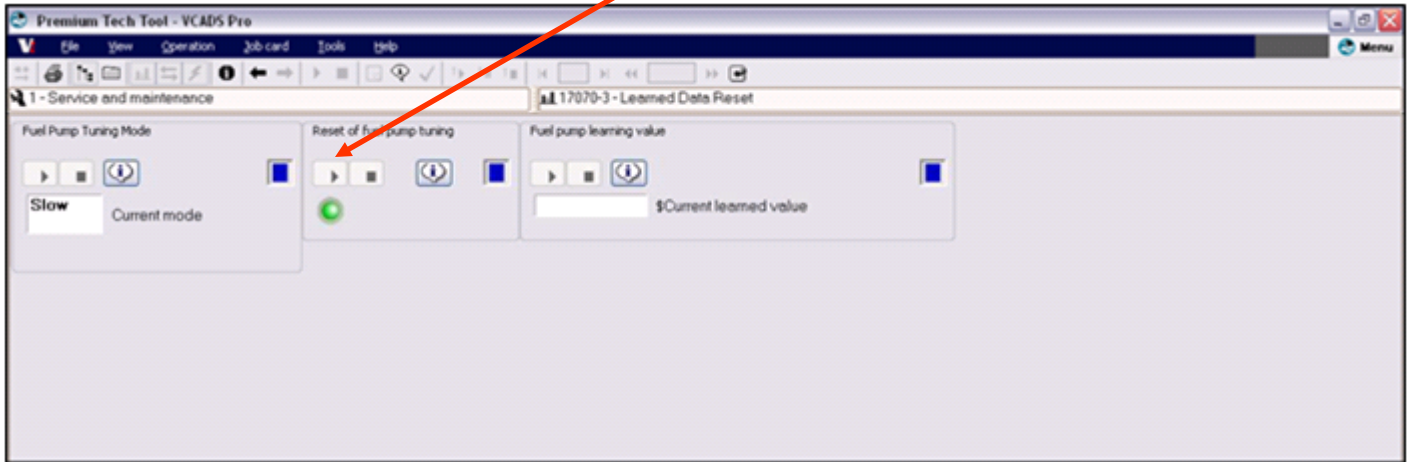
**STEP 2:** Check the current “Fuel Pump Tuning Mode” by clicking the start button in the “Fuel Pump Tuning Mode” section of the screen. The current “Fuel Pump Tuning Mode” should display “Off”.



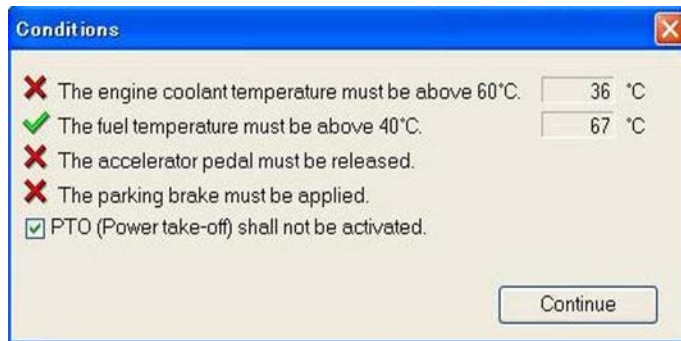
**STEP 3:** Next, click on the start button in the “\$Fuel pump Learning value” section of the screen.



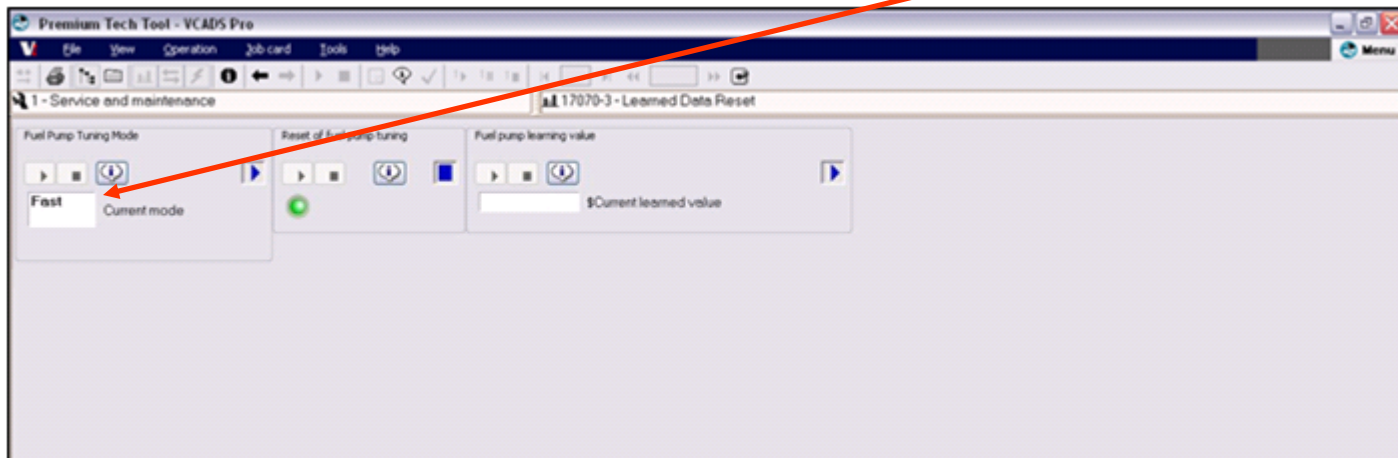
**STEP 4:** Click on the start button in the “Reset of fuel pump tuning” section of the screen.



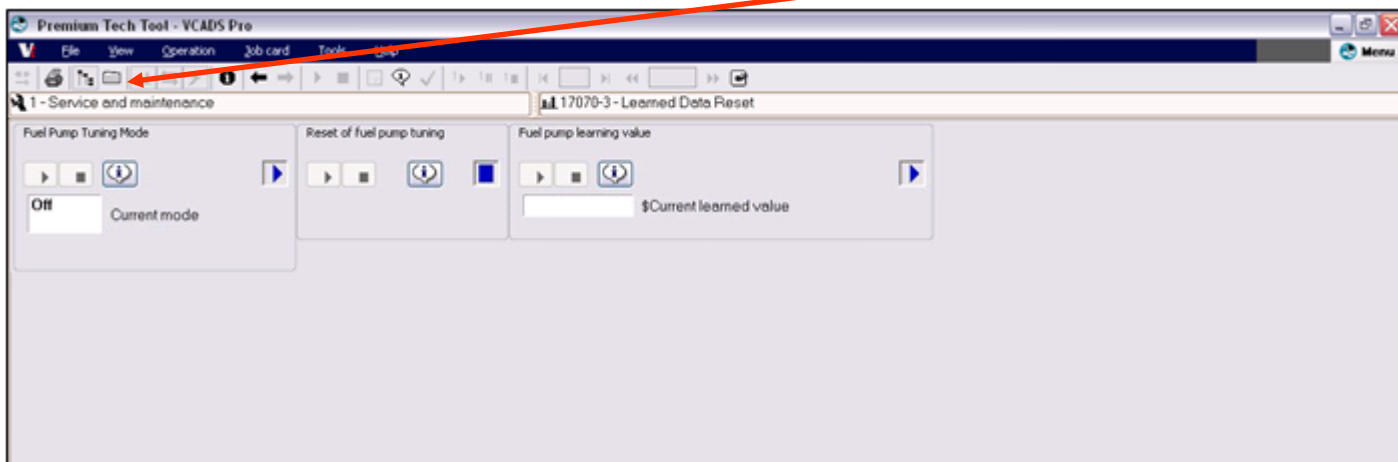
**STEP 5:** You will need to satisfy all of the conditions for performing the “Reset of fuel pump tuning”.



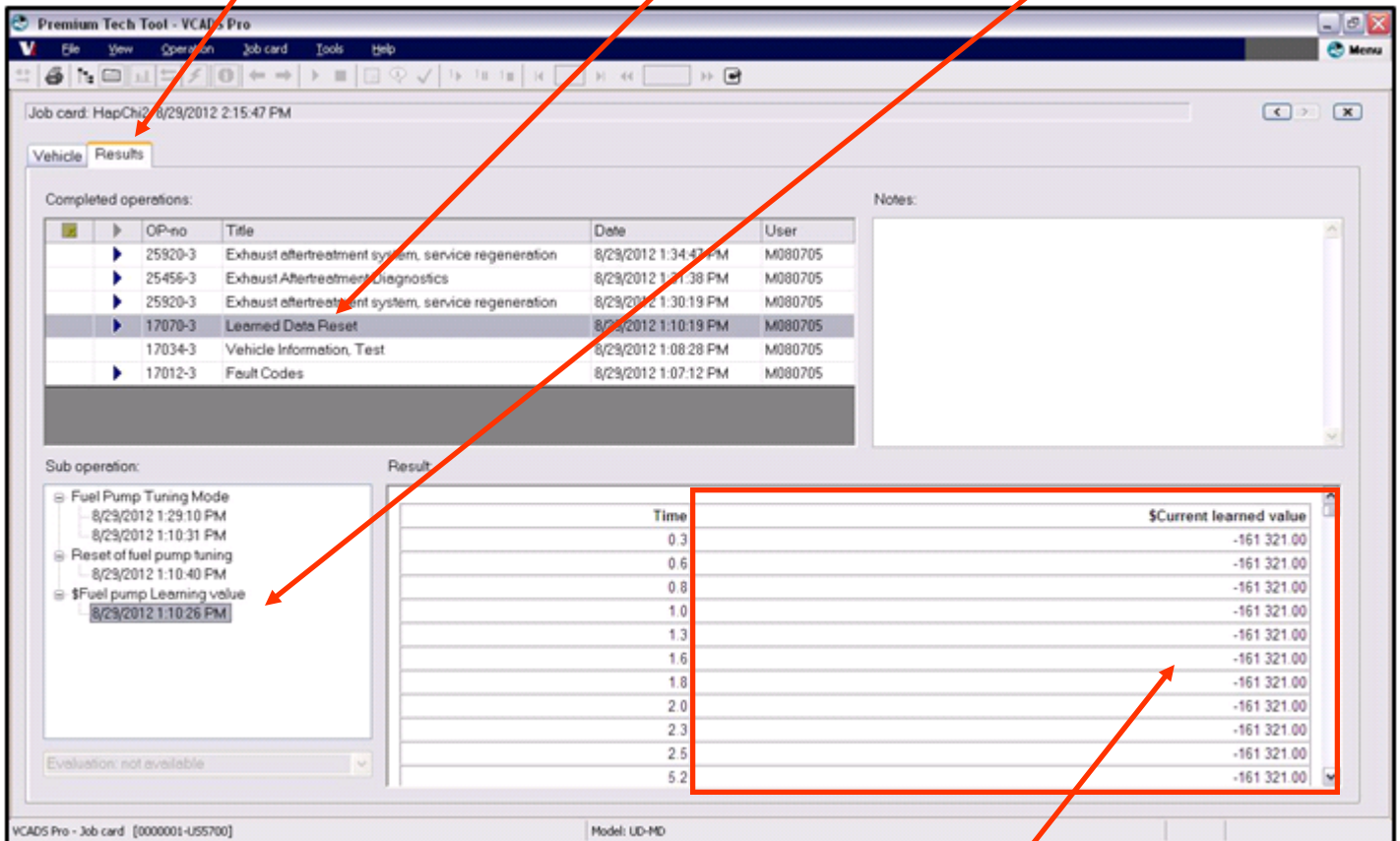
**STEP 6:** Once the “Fuel Pump Tuning Mode” is initiated, the display will show “Fast”, then “Slow”, then “Off”.



**STEP 7:** Once the “Fuel Pump Tuning Mode” displays “Off” switch your display to “Job Card View” by clicking on the job card icon.



**STEP 8:** Select the “Results Tab” Next select the “Learned Data Reset” in the “Completed Operations” menu. Then, click on the time and date stamp in the sub operations menu.



**STEP 9:** The final learned value of the pump should be between 50,000 and -450,000.

**Warranty Information:**

For vehicles under the Base New Vehicle Limited Warranty:

Labor Code 129B @ 0.5 hrs\*

\* Labor time to perform pump relearn is included with the labor time to replace the Supply pump, Suction Control Valve or to reprogram the Engine ECU.